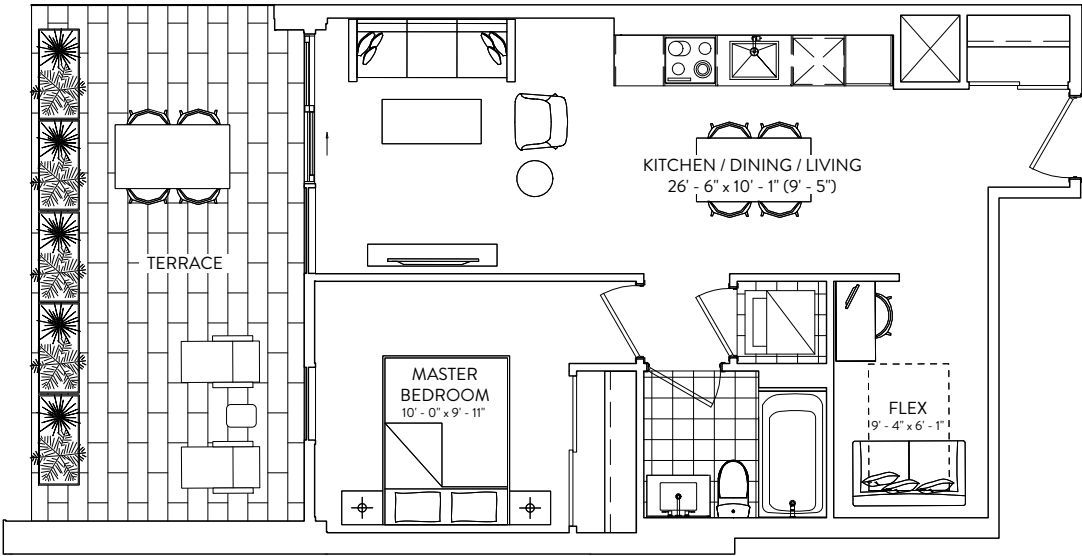
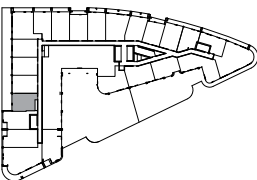


1B+F 606

INTERIOR: 606 SF | EXTERIOR: 215 SF | 1 BEDROOM + FLEX | 1 BATHROOM



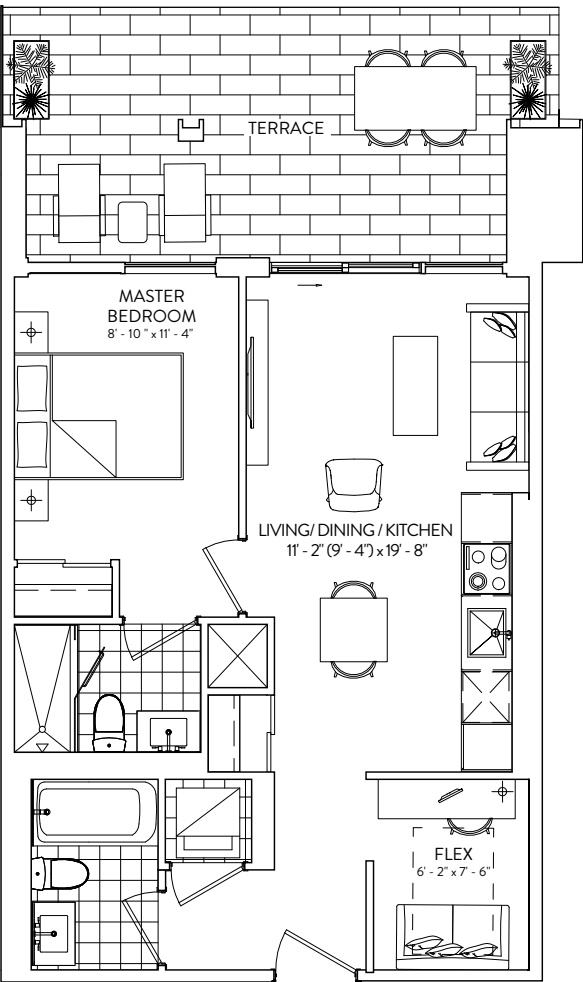
FLOOR 3



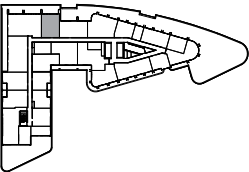
This plan is not to scale and is subject to architectural review and revision. The number of units per level and the number of floors may be reduced or increased at the vendor's sole discretion without notice. The purchaser acknowledges that the actual unit purchased may be a reverse layout to the plan shown. All materials, specifications, details and dimensions, if any, are approximate and subject to change without notice in order to comply with building site conditions and municipal, structural, vendor and/or architectural requirements. Actual living areas may vary from floor area stated. Floor areas have been measured and may vary in accordance with Bulletin #22 published by the Tarion Warranty Corporation. Bulkheads are not shown on this plan and may be located in areas of the Unit as required to provide venting and mechanical systems. Balconies, Terraces and Patios, if any, are exclusive use common elements shown for display purposes only and location and size are subject to change without notice. Window location, size and type may vary without notice. The length, width and directional position of the flooring are for illustration purposes only and may vary without notice. E.&O.E.

1B+F 637

INTERIOR: 637 SF | EXTERIOR: 194 SF | 1 BEDROOM + FLEX | 2 BATHROOM



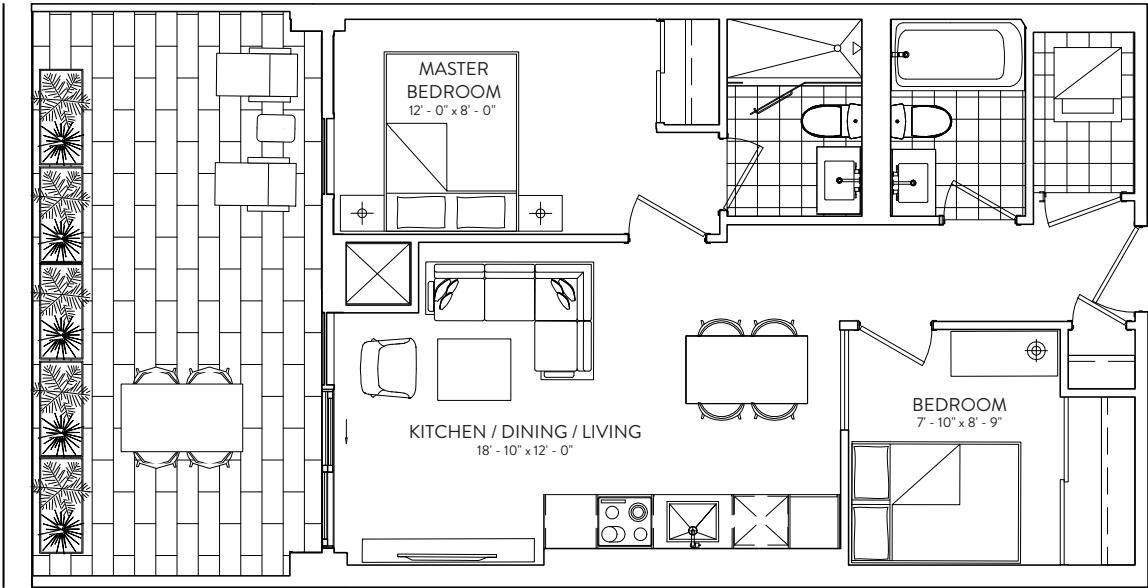
FLOOR 8



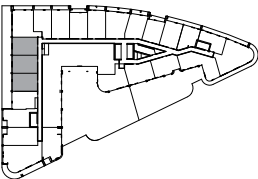
This plan is not to scale and is subject to architectural review and revision. The number of units per level and the number of floors may be reduced or increased at the vendor's sole discretion without notice. The purchaser acknowledges that the actual unit purchased may be a reverse layout to the plan shown. All materials, specifications, details and dimensions, if any, are approximate and subject to change without notice in order to comply with building site conditions and municipal, structural, vendor and/or architectural requirements. Actual living areas may vary from floor area stated. Floor areas have been measured and may vary in accordance with Bulletin #22 published by the Taroni Warranty Corporation. Bulkheads are not shown on this plan and may be located in areas of the Unit as required to provide venting and mechanical systems. Balconies, Terraces and Patios, if any, are exclusive use common elements shown for display purposes only and location and size are subject to change without notice. Window location, size and type may vary without notice. The length, width and directional position of the flooring are for illustration purposes only and may vary without notice. E.&O.E.

2B 655

INTERIOR: 655 SF | EXTERIOR: 226 SF 2 BEDROOM | 2 BATHROOM



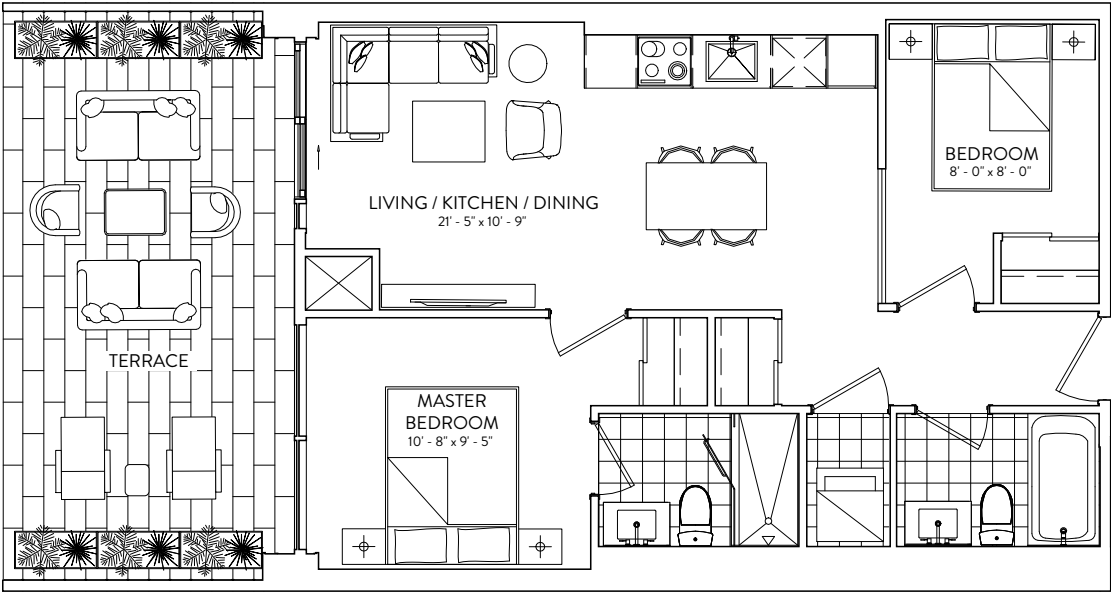
FLOOR 3



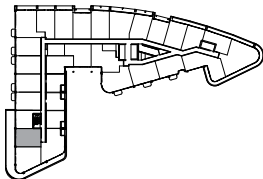
This plan is not to scale and is subject to architectural review and revision. The number of units per level and the number of floors may be reduced or increased at the vendor's sole discretion without notice. The purchaser acknowledges that the actual unit purchased may be a reverse layout to the plan shown. All materials, specifications, details and dimensions, if any, are approximate and subject to change without notice in order to comply with building site conditions and municipal, structural, vendor and/or architectural requirements. Actual living areas may vary from floor area stated. Floor areas have been measured and may vary in accordance with Bulletin #22 published by the Taron Warranty Corporation. Bulkheads are not shown on this plan and may be located in areas of the Unit as required to provide venting and mechanical systems. Balconies, Terraces and Patios, if any, are exclusive use common elements shown for display purposes only and location and size are subject to change without notice. Window location, size and type may vary without notice. The length, width and directional position of the flooring are for illustration purposes only and may vary without notice. E.&O.E.

2B 661

INTERIOR: 661 SF | EXTERIOR: 230 SF 2 BEDROOM | 2 BATHROOM



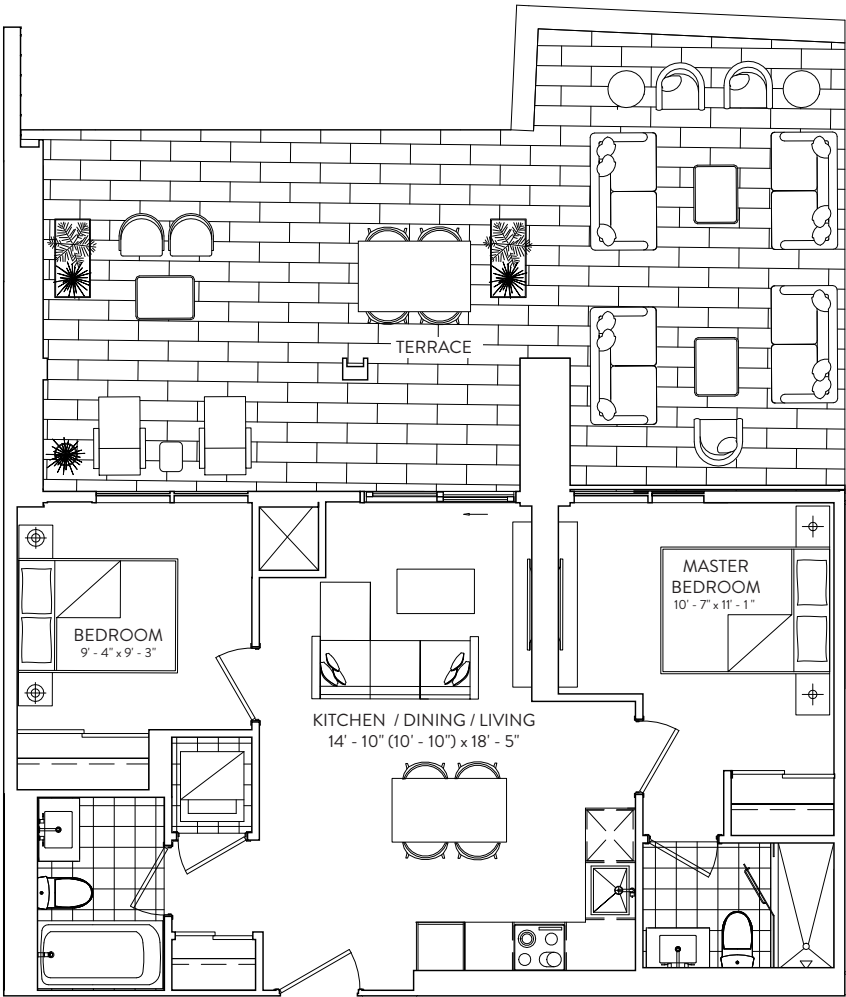
FLOOR 5



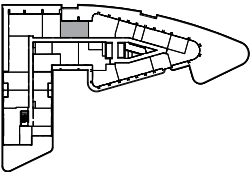
This plan is not to scale and is subject to architectural review and revision. The number of units per level and the number of floors may be reduced or increased at the vendor's sole discretion without notice. The purchaser acknowledges that the actual unit purchased may be a reverse layout to the plan shown. All materials, specifications, details and dimensions, if any, are approximate and subject to change without notice in order to comply with building site conditions and municipal, structural, vendor and/or architectural requirements. Actual living areas may vary from floor area stated. Floor areas have been measured and may vary in accordance with Bulletin #22 published by the Tarion Warranty Corporation. Bulkheads are not shown on this plan and may be located in areas of the Unit as required to provide venting and mechanical systems. Balconies, Terraces and Patios, if any, are exclusive use common elements shown for display purposes only and location and size are subject to change without notice. Window location, size and type may vary without notice. The length, width and directional position of the flooring are for illustration purposes only and may vary without notice. E.&O.E.

2B 674

INTERIOR: 674 SF | EXTERIOR: 495 SF 2 BEDROOM | 2 BATHROOM



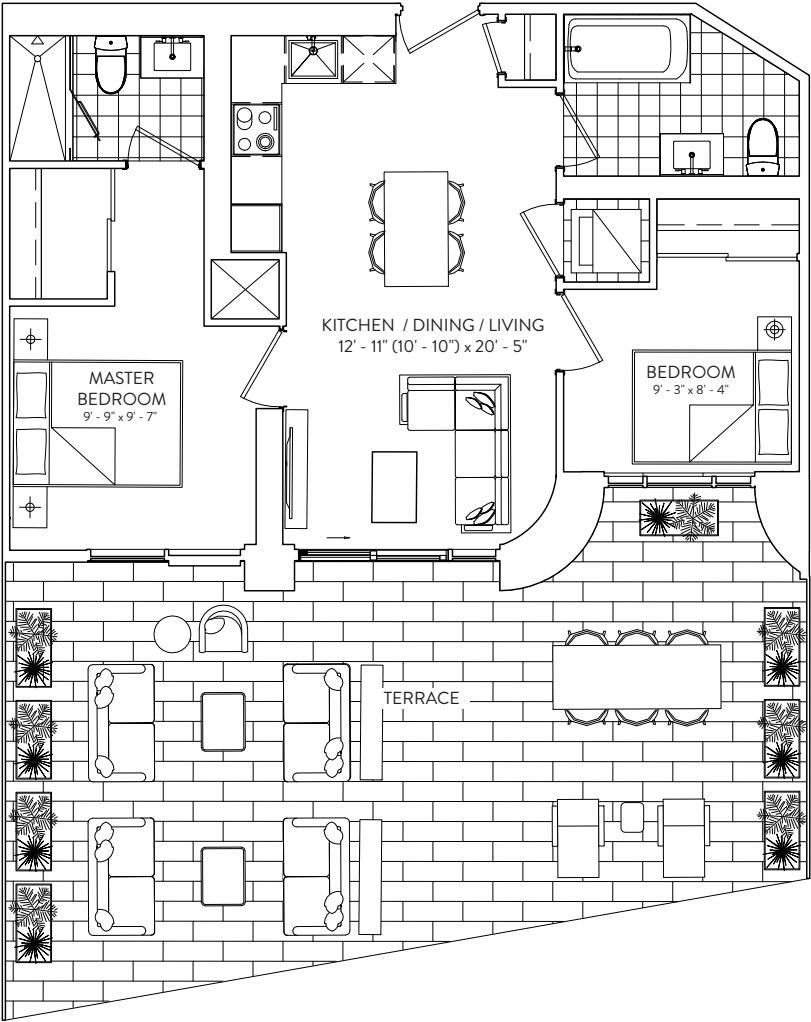
FLOOR 8



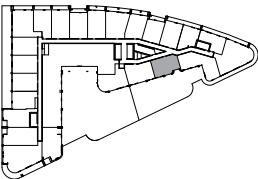
This plan is not to scale and is subject to architectural review and revision. The number of units per level and the number of floors may be reduced or increased at the vendor's sole discretion without notice. The purchaser acknowledges that the actual unit purchased may be a reverse layout to the plan shown. All materials, specifications, details and dimensions, if any, are approximate and subject to change without notice in order to comply with building site conditions and municipal, structural, vendor and/or architectural requirements. Actual living areas may vary from floor area stated. Floor areas have been measured and may vary in accordance with Bulletin #22 published by the Tarion Warranty Corporation. Bulkheads are not shown on this plan and may be located in areas of the Unit as required to provide venting and mechanical systems. Balconies, Terraces and Patios, if any, are exclusive use common elements shown for display purposes only and location and size are subject to change without notice. Window location, size and type may vary without notice. The length, width and directional position of the flooring are for illustration purposes only and may vary without notice. E.&O.E.

2B 682

INTERIOR: 682 SF | EXTERIOR: 517 SF 2 BEDROOM | 2 BATHROOM



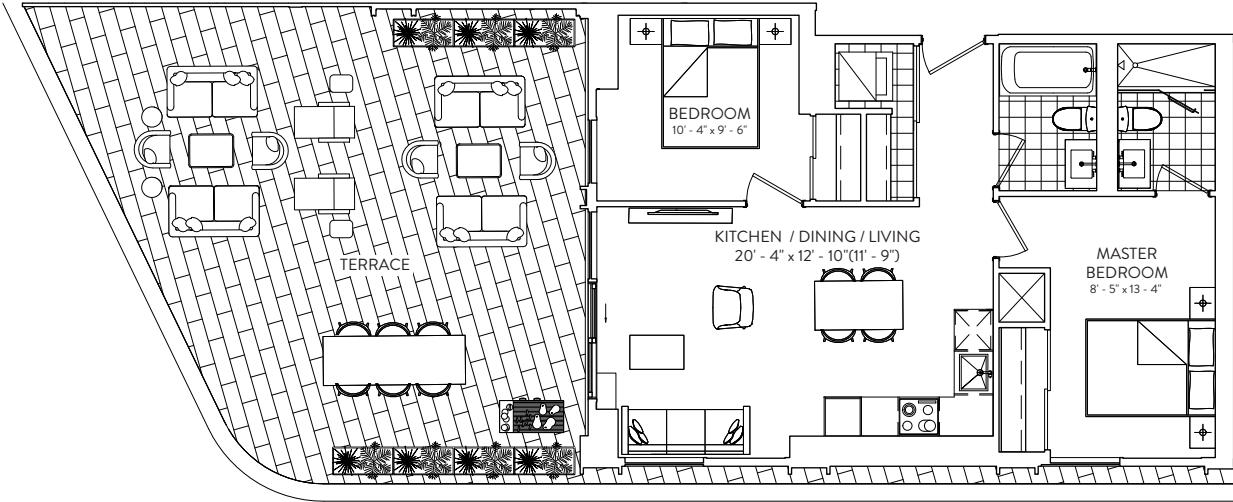
FLOOR 3



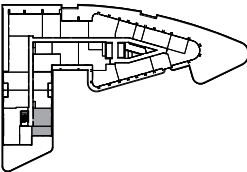
This plan is not to scale and is subject to architectural review and revision. The number of units per level and the number of floors may be reduced or increased at the vendor's sole discretion without notice. The purchaser acknowledges that the actual unit purchased may be a reverse layout to the plan shown. All materials, specifications, details and dimensions, if any, are approximate and subject to change without notice in order to comply with building site conditions and municipal, structural, vendor and/or architectural requirements. Actual living areas may vary from floor area stated. Floor areas have been measured and may vary in accordance with Bulletin #22 published by the Tarion Warranty Corporation. Bulkheads are not shown on this plan and may be located in areas of the Unit as required to provide venting and mechanical systems. Balconies, Terraces and Patios, if any, are exclusive use common elements shown for display purposes only and location and size are subject to change without notice. Window location, size and type may vary without notice. The length, width and directional position of the flooring are for illustration purposes only and may vary without notice. E.&O.E.

2B 739

INTERIOR: 739 SF | EXTERIOR: 537 SF 2 BEDROOM | 2 BATHROOM



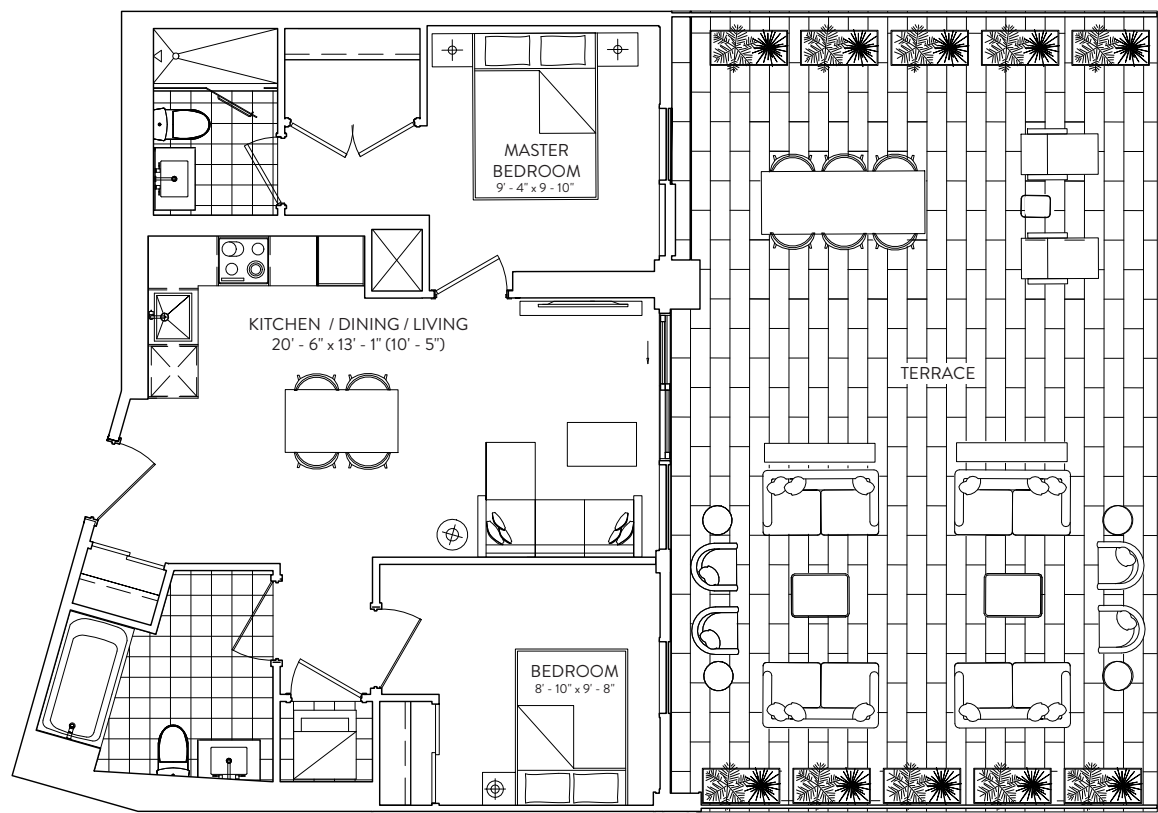
FLOOR 8



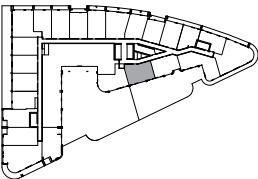
This plan is not to scale and is subject to architectural review and revision. The number of units per level and the number of floors may be reduced or increased at the vendor's sole discretion without notice. The purchaser acknowledges that the actual unit purchased may be a reverse layout to the plan shown. All materials, specifications, details and dimensions, if any, are approximate and subject to change without notice in order to comply with building site conditions and municipal, structural, vendor and/or architectural requirements. Actual living areas may vary from floor area stated. Floor areas have been measured and may vary in accordance with Bulletin #22 published by the Taron Warranty Corporation. Bulkheads are not shown on this plan and may be located in areas of the Unit as required to provide venting and mechanical systems. Balconies, Terraces and Patios, if any, are exclusive use common elements shown for display purposes only and location and size are subject to change without notice. Window location, size and type may vary without notice. The length, width and directional position of the flooring are for illustration purposes only and may vary without notice. E.&O.E.

2B 746

INTERIOR: 746 SF | EXTERIOR: 495 SF 2 BEDROOM | 2 BATHROOM



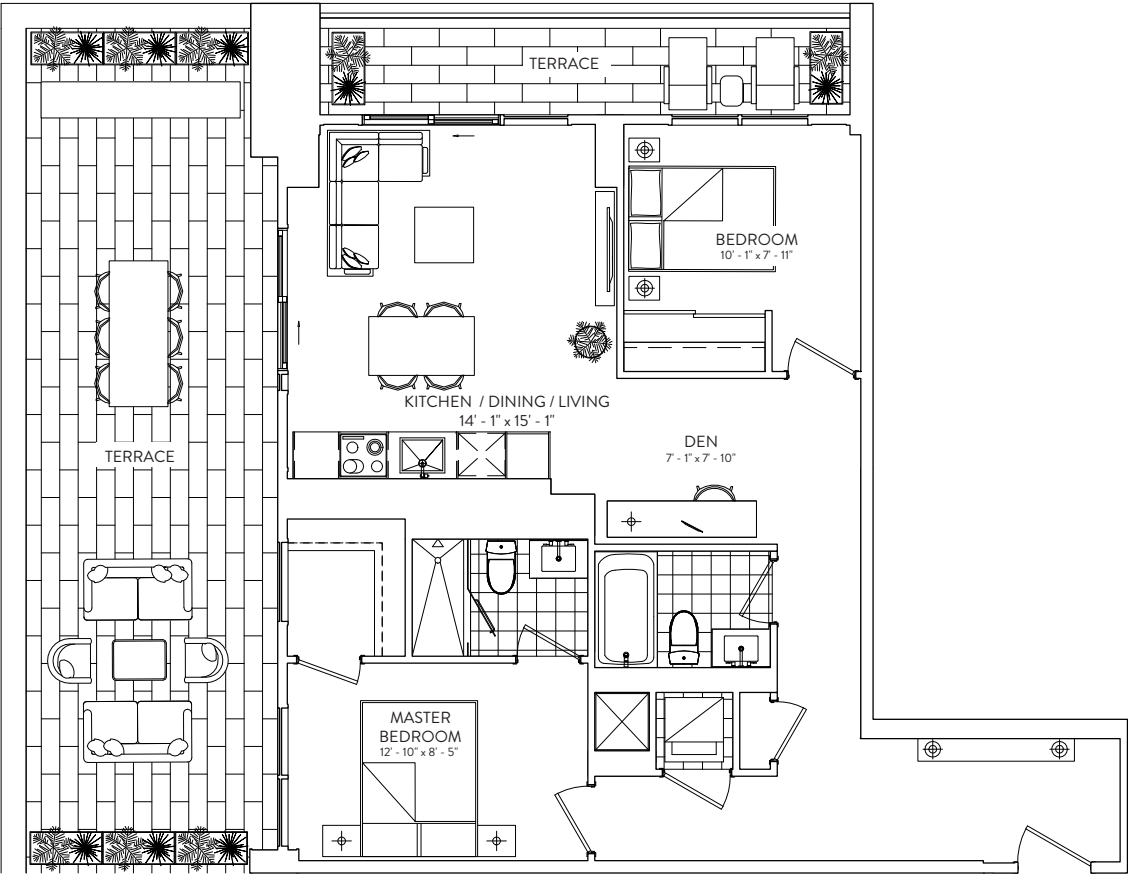
FLOOR 3



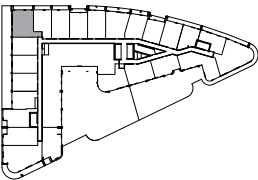
This plan is not to scale and is subject to architectural review and revision. The number of units per level and the number of floors may be reduced or increased at the vendor's sole discretion without notice. The purchaser acknowledges that the actual unit purchased may be a reverse layout to the plan shown. All materials, specifications, details and dimensions, if any, are approximate and subject to change without notice in order to comply with building site conditions and municipal, vendor and/or architectural requirements. Actual living areas may vary from floor area stated. Floor areas have been measured and may vary in accordance with Bulletin #22 published by the Taron Warranty Corporation. Bulkheads are not shown on this plan and may be located in areas of the Unit as required to provide venting and mechanical systems. Balconies, Terraces and Patios, if any, are exclusive use common elements shown for display purposes only and location and size are subject to change without notice. Window location, size and type may vary without notice. The length, width and directional position of the flooring are for illustration purposes only and may vary without notice. E.&O.E.

2B+D 917

INTERIOR: 917 SF | EXTERIOR: 477 SF 2 BEDROOM + DEN | 2 BATHROOM



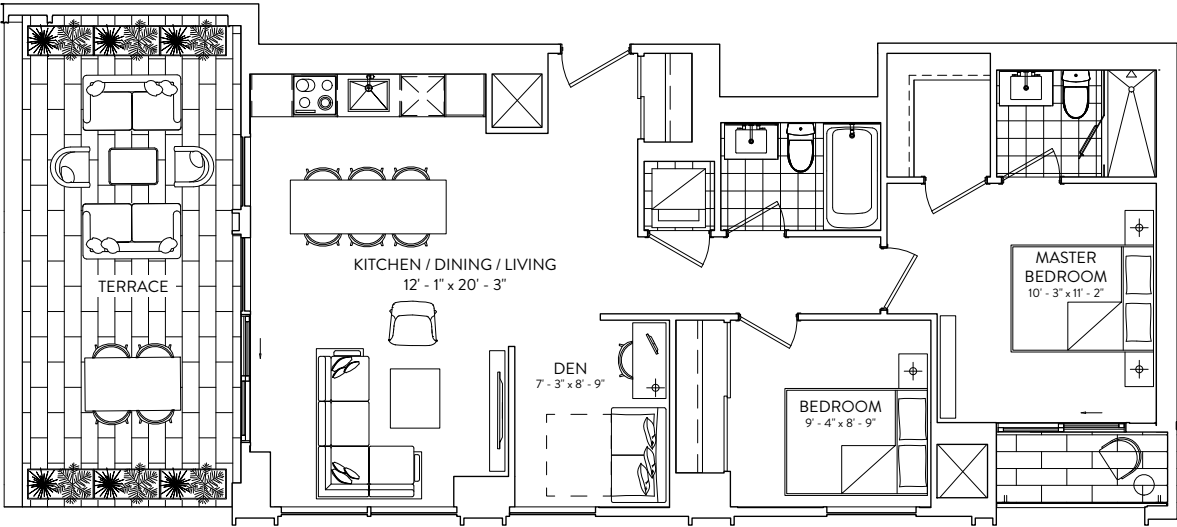
FLOOR 3



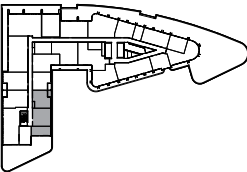
This plan is not to scale and is subject to architectural review and revision. The number of units per level and the number of floors may be reduced or increased at the vendor's sole discretion without notice. The purchaser acknowledges that the actual unit purchased may be a reverse layout to the plan shown. All materials, specifications, details and dimensions, if any, are approximate and subject to change without notice in order to comply with building site conditions and municipal, structural, vendor and/or architectural requirements. Actual living areas may vary from floor area stated. Floor areas have been measured and may vary in accordance with Bulletin #22 published by the Tarion Warranty Corporation. Bulkheads are not shown on this plan and may be located in areas of the Unit as required to provide venting and mechanical systems. Balconies, Terraces and Patios, if any, are exclusive use common elements shown for display purposes only and location and size are subject to change without notice. Window location, size and type may vary without notice. The length, width and directional position of the flooring are for illustration purposes only and may vary without notice. E.&O.E.

2B+D 920

INTERIOR: 920 SF | EXTERIOR: 226 SF 2 BEDROOM + DEN | 2 BATHROOM



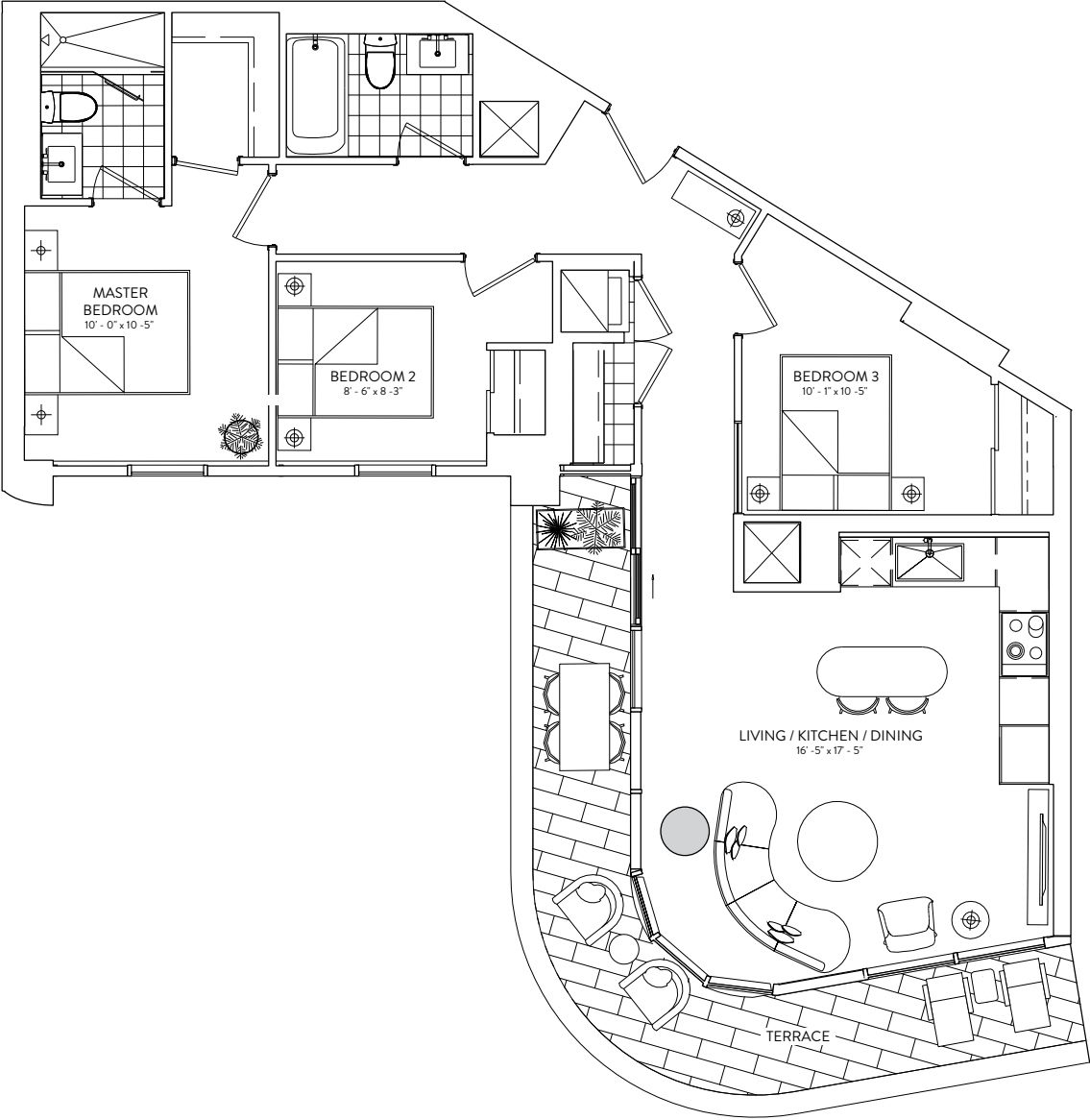
FLOOR 9



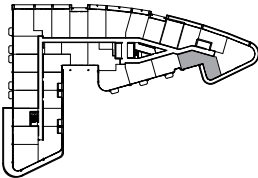
This plan is not to scale and is subject to architectural review and revision. The number of units per level and the number of floors may be reduced or increased at the vendor's sole discretion without notice. The purchaser acknowledges that the actual unit purchased may be a reverse layout to the plan shown. All materials, specifications, details and dimensions, if any, are approximate and subject to change without notice in order to comply with building site conditions and municipal, structural, vendor and/or architectural requirements. Actual living areas may vary from floor area stated. Floor areas have been measured and may vary in accordance with Bulletin #22 published by the Taron Warranty Corporation. Bulkheads are not shown on this plan and may be located in areas of the Unit as required to provide venting and mechanical systems. Balconies, Terraces and Patios, if any, are exclusive use common elements shown for display purposes only and location and size are subject to change without notice. Window location, size and type may vary without notice. The length, width and directional position of the flooring are for illustration purposes only and may vary without notice. E.&O.E.

3B 973

INTERIOR: 973 SF | EXTERIOR: 156 SF 3 BEDROOM | 2 BATHROOM



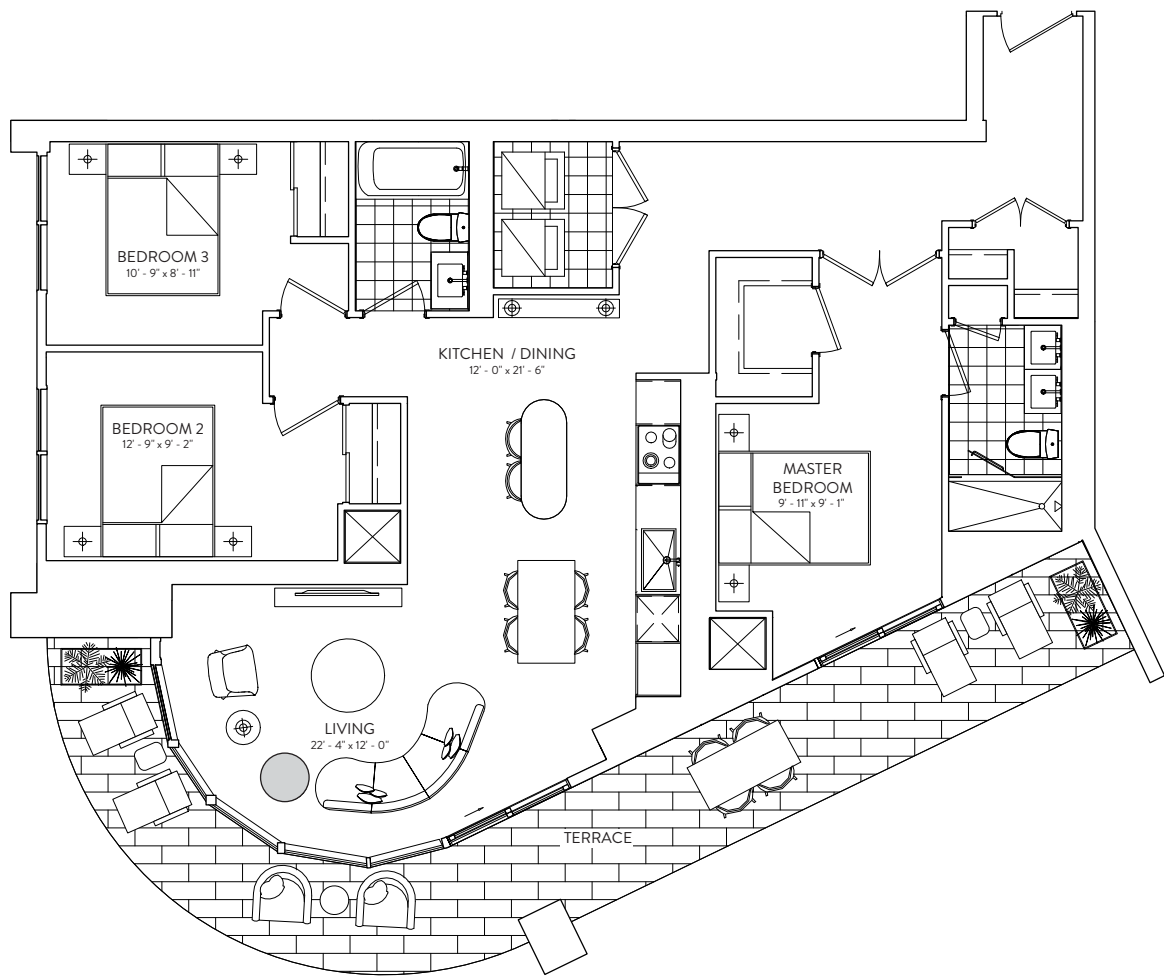
FLOORS 3-7



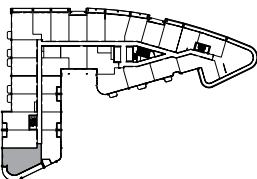
This plan is not to scale and is subject to architectural review and revision. The number of units per level and the number of floors may be reduced or increased at the vendor's sole discretion without notice. The purchaser acknowledges that the actual unit purchased may be a reverse layout to the plan shown. All materials, specifications, details and dimensions, if any, are approximate and subject to change without notice in order to comply with building site conditions and municipal, structural, vendor and/or architectural requirements. Actual living areas may vary from floor area stated. Floor areas have been measured and may vary in accordance with Bulletin #22 published by the Taron Warranty Corporation. Bulkheads are not shown on this plan and may be located in areas of the Unit as required to provide venting and mechanical systems. Balconies, Terraces and Patios, if any, are exclusive use common elements shown for display purposes only and location and size are subject to change without notice. Window location, size and type may vary without notice. The length, width and directional position of the flooring are for illustration purposes only and may vary without notice. E.&O.E.

3B 1250 S

INTERIOR: 1250 SF | EXTERIOR: 270 SF 3 BEDROOM | 2 BATHROOM



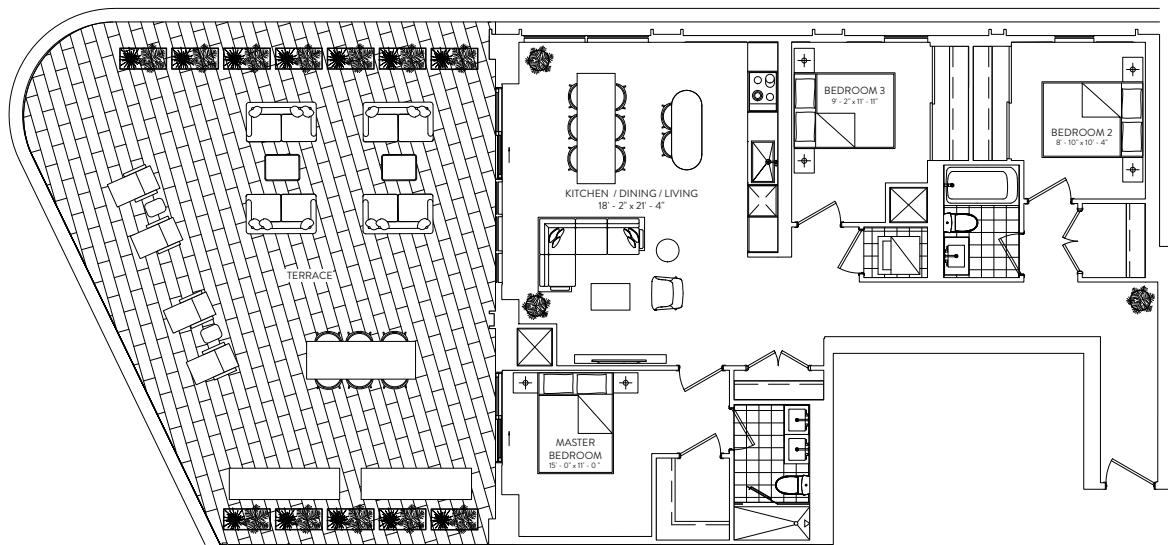
FLOORS 3-4



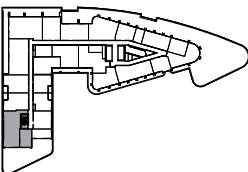
This plan is not to scale and is subject to architectural review and revision. The number of units per level and the number of floors may be reduced or increased at the vendor's sole discretion without notice. The purchaser acknowledges that the actual unit purchased may be a reverse layout to the plan shown. All materials, specifications, details and dimensions, if any, are approximate and subject to change without notice in order to comply with building site conditions and municipal, structural, vendor and/or architectural requirements. Actual living areas may vary from floor area stated. Floor areas have been measured and may vary in accordance with Bulletin #22 published by the Tarion Warranty Corporation. Bulkheads are not shown on this plan and may be located in areas of the Unit as required to provide venting and mechanical systems. Balconies, Terraces and Patios, if any, are exclusive use common elements shown for display purposes only and location and size are subject to change without notice. Window location, size and type may vary without notice. The length, width and directional position of the flooring are for illustration purposes only and may vary without notice. E.&O.E.

3B 1250 W

INTERIOR: 1250 SF | EXTERIOR: 872 SF 3 BEDROOM | 2 BATHROOM



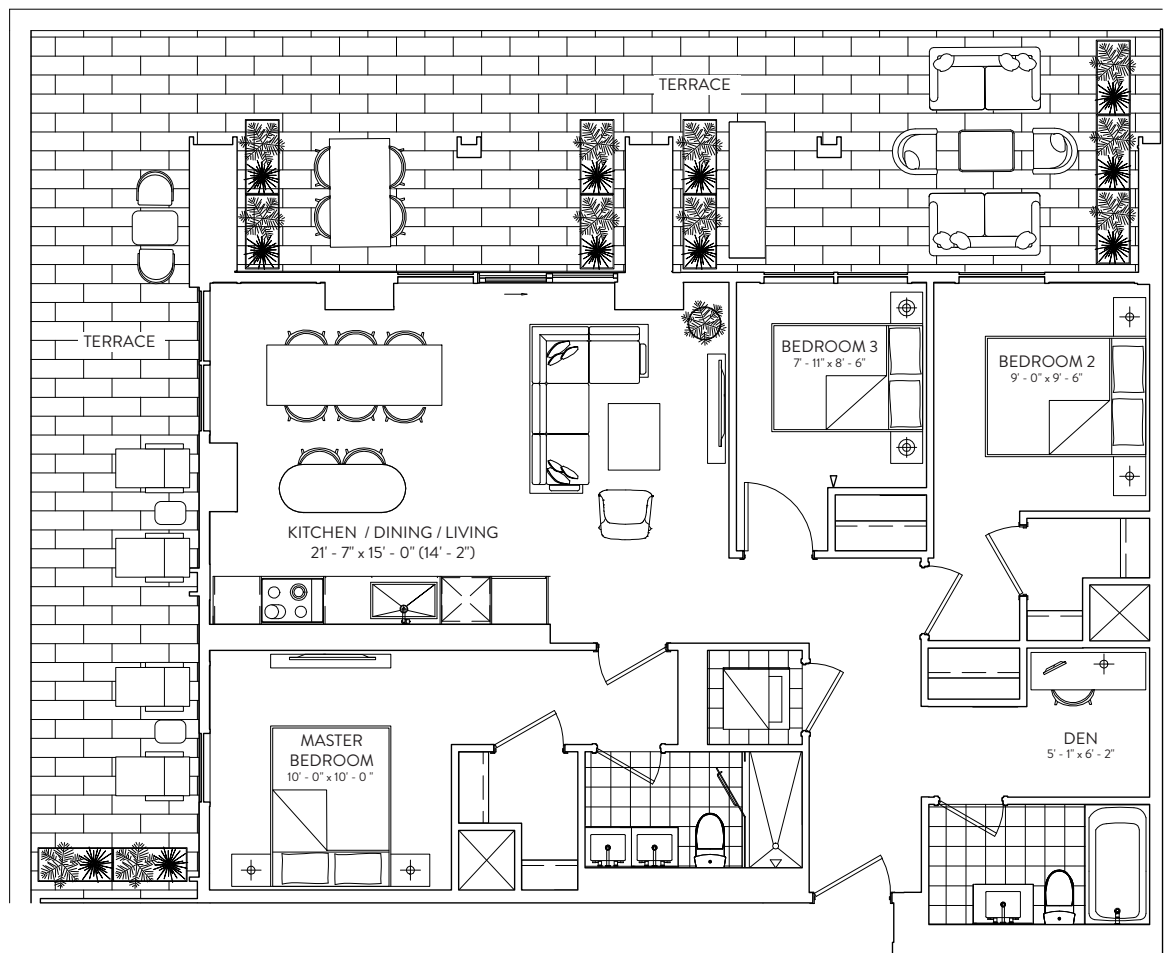
FLOORS 8



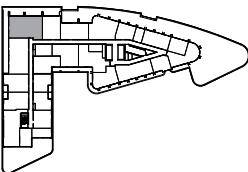
This plan is not to scale and is subject to architectural review and revision. The number of units per level and the number of floors may be reduced or increased at the vendor's sole discretion without notice. The purchaser acknowledges that the actual unit purchased may be a reverse layout to the plan shown. All materials, specifications, details and dimensions, if any, are approximate and subject to change without notice in order to comply with building site conditions and municipal, structural, vendor and/or architectural requirements. Actual living areas may vary from floor area stated. Floor areas have been measured and may vary in accordance with Bulletin #22 published by the Taron Warranty Corporation. Bulkheads are not shown on this plan and may be located in areas of the Unit as required to provide venting and mechanical systems. Balconies, Terraces and Patios, if any, are exclusive use common elements shown for display purposes only and location and size are subject to change without notice. Window location, size and type may vary without notice. The length, width and directional position of the flooring are for illustration purposes only and may vary without notice. E.&O.E.

3B+D 1110

INTERIOR: 1110 SF | EXTERIOR: 614 SF 3 BEDROOM + DEN | 2 BATHROOM



FLOOR 8



This plan is not to scale and is subject to architectural review and revision. The number of units per level and the number of floors may be reduced or increased at the vendor's sole discretion without notice. The purchaser acknowledges that the actual unit purchased may be a reverse layout to the plan shown. All materials, specifications, details and dimensions, if any, are approximate and subject to change without notice in order to comply with building site conditions and municipal, structural, vendor and/or architectural requirements. Actual living areas may vary from floor area stated. Floor areas have been measured and may vary in accordance with Bulletin #22 published by the Taron Warranty Corporation. Bulkheads are not shown on this plan and may be located in areas of the Unit as required to provide venting and mechanical systems. Balconies, Terraces and Patios, if any, are exclusive use common elements shown for display purposes only and location and size are subject to change without notice. Window location, size and type may vary without notice. The length, width and directional position of the flooring are for illustration purposes only and may vary without notice. E.&O.E.